



fienza[®]

SANITARYWARE







CONTENTS

BASINS

- Basins Guide 4
- Petra Collection 5
- Above Counter Ceramic 6 - 9
- Above Counter Glass 9
- Above Counter Cast Stone 10
- Semi-Inset 11
- Fully-Inset 12
- Undermounted 12
- Semi-Recessed 13
- Wall-Hung 14 - 15

TOILETS

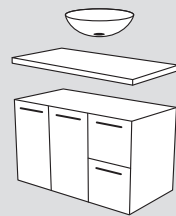
- Toilets Guide 16 - 17
- Back-to-Wall Suites 18 - 20
- Close-Coupled Toilet Suites 20
- Adjustable Link Suites 21
- Wall-Hung & Wall-Faced Suites 22 - 23
- Flush Plates & Cisterns 24 - 25

BATHS

- Freestanding Acrylic 26 - 27
- Back-to-Wall Acrylic 28
- Corner Acrylic 29
- Resin Stone 30
- Cast Stone 30 - 35

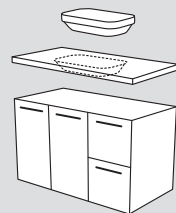
All prices are Recommended Retail Prices (RRP) including GST. Prices are subject to change or correction without notification. Consumers should enquire with a retailer for actual pricing. All information is provided on an E&OE basis (Errors and Omissions Excepted). Always check fienza.com.au for the latest, up-to-date product information. Images in this brochure are shown with accessories and/or other furniture which is not included in the price, and such products may not be available within our range.

BASINS



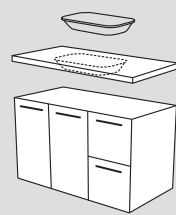
ABOVE COUNTER

These basins sit on top of the counter and provide extra height, helping to keep your counter top clean. They make a great focal point or centrepiece.



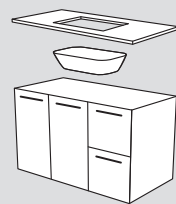
SEMI-INSET

Semi-inset basins are a design hybrid of the above counter and fully-inset basin types. They are a great option for those wanting an above counter look without compromising on counter space.



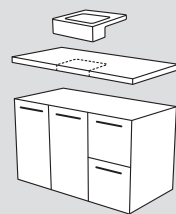
FULLY-INSET

Much of this basin is inset below the counter top with a low-profile lip to help it sit in place. Often referred to as a drop-in basin, it requires a special cut in the counter top so it can be dropped in and fitted securely.



UNDERMOUNTED

This type of basin is mounted to the counter top from underneath. They provide plenty of counter space and make cleaning easy.



SEMI-RECESSED

This basin is partially recessed into the counter top with the basin protruding from the front of the vanity. They provide easier access to the tap and bowl and are great for small bathrooms or powder rooms where shallow counter tops are used.



WALL-HUNG

The wall-hung basin is mounted to the wall and leaves the pipework underneath exposed. Its space saving design makes it ideal for small bathrooms or those requiring wheelchair access.



5-Year Warranty on Ceramic and Glass



25-Year Warranty on Cast Stone (Structural)



5-Year Warranty on Cast Stone Finish

Visit [fienza.com.au](https://www.fienza.com.au) for full warranty terms and conditions.



Petra

COLLECTION

The specially designed Petra ceramic basin collection encases a wide rectangular shaped bowl with soft curves for a distinctly modern look. Lending itself to a wide range of bathroom styles, the Petra basin is a timeless statement piece that can be easily accented with unique tapware and pop-up waste finishes.



PETRA Above Counter
500 x 420 x 120 mm
1 tap hole • \$249 • RB2173
3 tap holes • \$299 • RB2173-3



PETRA Matte Black Above Counter
500 x 420 x 120 mm
1 tap hole • \$460 • RB2173B
3 tap holes • \$510 • RB2173B-3



PETRA MINI Above Counter
420 x 420 x 120 mm
\$249 • RB2177



PETRA Semi-Inset
420 x 420 x 50 mm
\$249 • RB4063



PETRA Semi-Recessed
500 x 420 x 120 mm
\$249 • RB4044



PETRA MINI Semi-Recessed
400 x 360 x 160 mm
\$249 • RB5050



PETRA Left-Hand Wall-Hung
600 x 420 x 120 mm
\$375 • RB2223L



PETRA Right-Hand Wall-Hung
600 x 420 x 120 mm
\$375 • RB2223R



Reba

ABOVE COUNTER COLLECTION

Make your bathroom pop with Reba above counter ceramic basins. With eight different colour finishes to choose from, and matching coloured wastes, you can get creative with a unique centre-piece for your bathroom.



Gloss White
360 x 360 x 120 mm
\$199 • RB3134



Matte White
360 x 360 x 120 mm
\$329 • RB3134W



Matte Pink
360 x 360 x 120 mm
\$329 • RB3134P



Matte Green
360 x 360 x 120 mm
\$329 • RB3134G



Matte Blue
360 x 360 x 120 mm
\$329 • RB3134BLUE



Matte Light Grey
360 x 360 x 120 mm
\$329 • RB3134LG



Matte Dark Grey
360 x 360 x 120 mm
\$329 • RB3134DG



Matte Black
360 x 360 x 120 mm
\$329 • RB3134B

MATCHING CERAMIC FINISH POP-UP WASTES:



Gloss White
\$60 • WAS81



Matte White
\$60 • WAS59MW



Matte Pink
\$60 • WAS59P



Matte Green
\$60 • WAS59GR



Matte Blue
\$60 • WAS59BLUE



Matte Light Grey
\$60 • WAS59LG



Matte Dark Grey
\$60 • WAS59DG



Matte Black
\$60 • WAS59MB

Ceramic

ABOVE COUNTER BASINS

Fienza's range of ceramic basins are made from vitreous china to ensure maximum durability, and resistance to water and moisture. The ceramic range includes various styles, colours, and gloss or matte finishes depending on the model. Our extensive range of pop-up wastes allow you to match or contrast the cap colour to your basin or tapware.



LUCIANA®
510 x 405 x 110 mm
\$249 • RB2178



LUCIANA® Matte Black
510 x 405 x 110 mm
\$430 • RB2178B



PETRA MINI
420 x 420 x 120 mm
\$249 • RB2177



PETRA
500 x 420 x 120 mm
1 tap hole • \$249 • RB2173
3 tap holes • \$299 • RB2173-3



PETRA Matte Black
500 x 420 x 120 mm
1 tap hole • \$460 • RB2173B
3 tap holes • \$510 • RB2173B-3



MODENA BABY
330 x 290 x 120 mm
\$175 • TR4549



MODENA
590 x 450 x 150 mm
1 tap hole • \$285 • RB07N
3 tap holes • \$335 • RB07N-3



HELEN
460 x 460 x 150 mm
1 tap hole • \$249 • RB71
3 tap holes • \$299 • RB71-3



HELEN JUNIOR
380 x 380 x 125 mm
1 tap hole • \$199 • TR4148
3 tap holes • \$249 • TR4148-3

CERAMIC ABOVE COUNTER BASINS



COMO
475 x 435 x 80 mm
\$199 • 7078W



WILLOW
495 x 395 x 150 mm
1 tap hole • \$249 • RB7033
3 tap holes • \$299 • RB7033-3



RAINE
405 x 405 x 90 mm
\$230 • RB2113



JENNA
410 x 410 x 120 mm
\$199 • RB09



EVIE
400 x 400 x 120 mm
\$199 • TR4322



CHLOE
400 x 400 x 105 mm
\$199 • RB2245



LINCOLN 570
570 x 390 x 120 mm
\$249 • RB05



LINCOLN 350
350 x 390 x 120 mm
\$199 • RB04



ALIX
350 x 350 x 100 mm
\$249 • RB3130





KOKO® 465
465 x 375 x 115 mm
\$199 • RB185



KOKO® 465 Matte White
465 x 375 x 115 mm
\$480 • RB185MW



KOKO® 465 Matte Black
465 x 375 x 115 mm
\$480 • RB185B



KOKO® 370
370 x 370 x 115 mm
\$199 • RB184



CHICA 500
505 x 385 x 120 mm
\$199 • RB2202



CHICA 405
405 x 405 x 120 mm
\$199 • RB2201



PAOLA
410 x 340 x 145 mm
\$199 • RB3078



KEETO
500 x 350 x 95 mm
\$249 • RB814



LULU
421 x 421 x 152 mm
\$199 • TR4037



Glass BASINS

CRISTELLO Clear
420 x 420 x 145 mm
\$449 • RB201

CRISTELLO Electric Silver
420 x 420 x 145 mm
\$599 • RB205



Cast Stone ABOVE COUNTER BASINS

Cast stone basins have a smooth matte finish and are made with the same solid material all the way through. Made with a special formula, Fienza basins do not crack or turn yellow over time like some other solid surface materials available in the market. If white cast stone basins are damaged, they can be sanded and refinished like new.



RONDO 400
410 x 415 x 105 mm
1 tap hole • \$399 • CSB09
3 tap holes • \$449 • CSB09-3



RONDO 600
600 x 415 x 105
1 tap hole • \$469 • CSB010
3 tap holes • \$519 • CSB010-3



ANTONIA Matte White
600 x 410 x 110 mm
\$499 • CSB088



NERO Matte White
580 x 380 x 145 mm
\$499 • CSB63



BAHAMA MKII Matte White
600 x 357 x 160 mm
\$499 • CSB61



LEXY Matte White
380 x 380 x 160 mm
\$399 • CSB038

MATCHING STONE FINISH POP-UP WASTES:



Matte White
\$65 • WAS59W



Matte Black
\$65 • WAS59B



Matte Grey
\$65 • WAS59G

CAST STONE ABOVE COUNTER BASINS



BAHAMA Matte White
600 x 350 x 105 mm
\$399 • CSB01



BAHAMA Matte Black
600 x 350 x 105 mm
\$599 • CSB01-MB



BAHAMA Matte Grey
600 x 350 x 105 mm
\$599 • CSB01-GREY



CLASSIQUE 600 Matte White
600 x 345 x 105 mm
\$449 • CSB03



CLASSIQUE 600 Matte Black
600 x 345 x 105 mm
\$649 • CSB03-MB



CLASSIQUE 600 Matte Grey
600 x 345 x 105 mm
\$649 • CSB03-GREY



CLASSIQUE 420 Matte White
420 x 420 x 105 mm
\$399 • CSB02



CLASSIQUE 420 Matte Black
420 x 420 x 105 mm
\$599 • CSB02-MB





Semi-Inset BASINS

Semi-inset basins are a design hybrid of the above counter and fully-inset basin types. They are a great option for those wanting an above counter look without compromising on counter space.



LOW PROFILE Ceramic

500 x 445 x 85 mm

1 tap hole • \$249 • TR4034A
3 tap holes • \$299 • TR4034A-3

(Cannot be used with Fienza Stone
& Timber Top Vanity Cabinets)



ALISON Ceramic

405 x 405 x 60 mm

\$249 • TR4975



PETRA Ceramic

420 x 420 x 50 mm

\$249 • RB4063



KADOS Cast Stone

450 x 330 x 80 mm

\$420 • CSB05



SARAH Ceramic

440 x 310 x 50 mm

\$199 • RB4071



PARISA Ceramic

515 x 370 x 65 mm

1 tap hole • \$249 • RB5033-1
No tap hole • \$249 • RB5033-0



DAYO Ceramic

595 x 360 x 45 mm

\$249 • RB5032



REBA Ceramic with Tap hole

390 x 390 x 50 mm

\$220 • RB4066



REBA Ceramic

362 x 362 x 54 mm

\$199 • RB3134D

Fully-Inset BASINS

A fully-inset basin is set below the counter top with a low-profile lip to help it sit in place. Often referred to as a drop-in basin, it requires a special cut in the counter top so it can be dropped in and fitted securely.



CRYSTAL Ceramic
515 x 450 x 190 mm
1 tap hole • \$120 • TR4056-1
3 tap holes • \$120 • TR4056-3



CRYSTAL Off-White Ceramic
530 x 445 x 195 mm
1 tap hole • \$130 • TR4056I-1
3 tap holes • \$130 • TR4056I-3



LACY Ceramic
550 x 470 x 200 mm
\$120 • RB506A



ALLISON Ceramic
425 x 425 x 170 mm
1 tap hole • \$199 • TR4583
3 tap holes • \$249 • TR4583-3



RAK
CERAMICS

RAK JESSICA Ivory Ceramic
530 x 435 x 225 mm
1 tap hole • \$199 • 603201I
3 tap holes • \$199 • 603203I



RAK
CERAMICS

RAK CHAMELION Ceramic
560 x 325 x 135 mm
\$260 • 602900W



Semi-Recessed BASINS

These basins are partially recessed into the counter top with the basin protruding from the front of the vanity. They provide easier access to the tap and bowl and are great for small bathrooms or powder rooms where shallow counter tops are used.



BELINDA Ceramic
525 x 425 x 153 mm
\$199 • RB8050B



PETRA Ceramic
500 x 420 x 120 mm
\$249 • RB4044



PETRA MINI Ceramic
400 x 360 x 160 mm
\$249 • RB5050



Accessible
Compliant



JACINTA Ceramic
480 x 460 x 150 mm
1 tap hole • \$199 • RB8050J
3 tap holes • \$249 • RB8050J-3



HELEN JUNIOR Ceramic
415 x 410 x 145 mm
\$199 • 2041B



RAK NOVA Ceramic
460 x 460 x 150 mm
1 tap hole • \$349 • 602101W
3 tap holes • \$379 • 602103W



Accessible
Compliant



RAK RESERVA Ceramic
560 x 515 x 185 mm
1 tap hole • \$349 • 606601W
3 tap holes • \$379 • 606603W

RAK
CERAMICS



RAK COMPACT Ceramic
550 x 415 x 195 mm
1 tap hole • \$230 • 603701W
3 tap holes • \$260 • 603703W

RAK
CERAMICS



MICKI Ceramic
515 x 430 x 175 mm
1 tap hole • \$170 • RB760
3 tap holes • \$170 • RB760-3

SEMI-RECESSED BASINS

SEMI-RECESSED



BETTY Ceramic
430 x 430 x 150 mm
\$210 • MG-7003B



REBA Ceramic, No Tap Hole
360 x 360 x 120 mm
\$249 • RB4064



REBA Ceramic with Tap Hole
390 x 390 x 160 mm
\$199 • RB4065



UNDERMOUNTED

Undermounted BASINS

This type of basin is mounted to the counter top from underneath. They provide plenty of counter space and make cleaning easy.



KARMEN Ceramic
455 x 380 x 195 mm
\$105 • TR908



SARAH Ceramic
465 x 345 x 210 mm
\$199 • TR4070

RAK
CERAMICS



RAK EMMA Ceramic
404 x 404 x 193 mm
\$249 • 602700W

CAN ALSO
BE FULLY-
INSET



PETRA Right-Hand Ceramic Basin

600 x 420 x 120 mm

\$375 • RB2223R

ALIX Back-To-Wall Toilet

Standard Seat

WELS 4 Star rated, 4.5L/3L (3.3L average flush)

P-Trap • \$564 • K011P

S-Trap 90-160 • \$599 • K011A

S-Trap 160-230 • \$614 • K011B

Wall-Hung BASINS



The wall-hung basin is mounted to the wall and leaves the pipework and fittings underneath exposed. Its space saving design makes it the perfect choice for small bathrooms. Wall-hung basins are also used for bathrooms requiring wheelchair access as they have a clear space underneath.



Accessible
Compliant



DELTA CARE Left-Hand Ceramic

575 x 400 x 163 mm

\$349 • RB2275L



Accessible
Compliant



DELTA CARE Right-Hand Ceramic

575 x 400 x 163 mm

\$349 • RB2275R



PETRA Left-Hand Ceramic

600 x 420 x 120 mm

\$375 • RB2223L



LINEA Left-Hand Ceramic

500 x 250 x 144 mm

\$199 • TR4127



LINEA Right-Hand Ceramic

500 x 250 x 144 mm

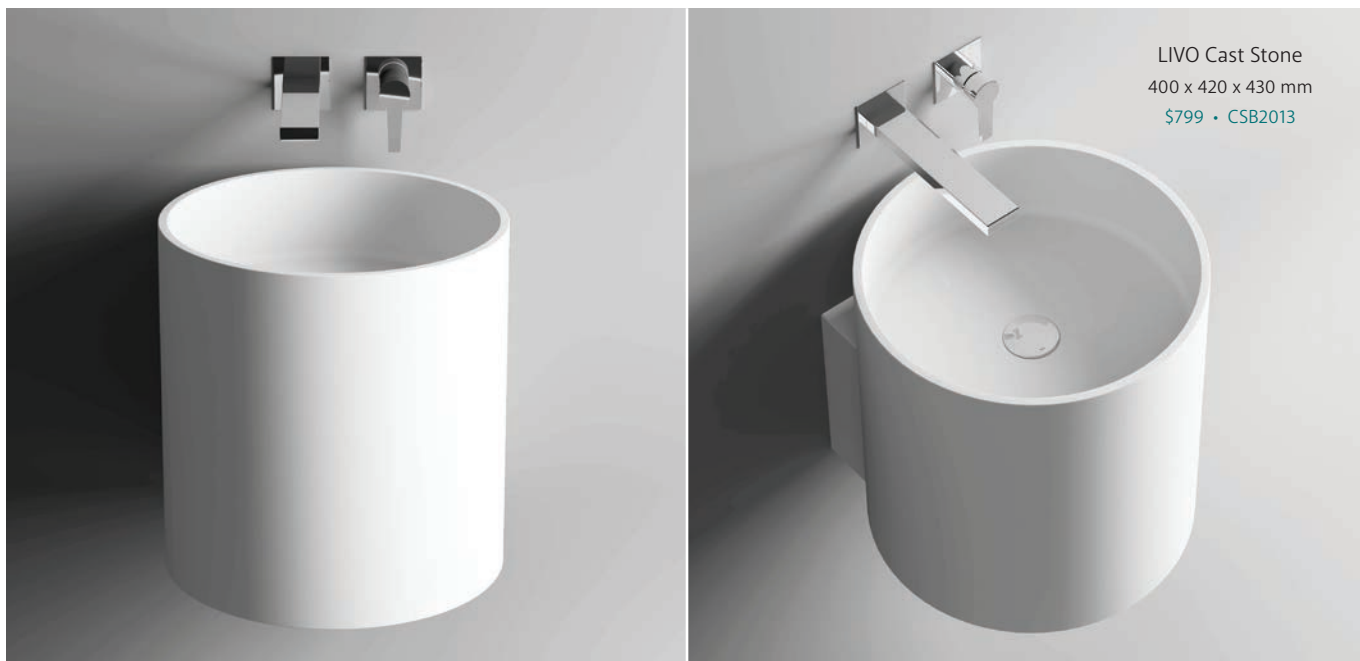
\$199 • TR4127A



PETRA Right-Hand Ceramic

600 x 420 x 120 mm

\$375 • RB2223R



LIVO Cast Stone
400 x 420 x 430 mm
\$799 • CSB2013



RAK
CERAMICS

RAK COMPACT 450 Ceramic
450 x 360 x 195 mm
1 tap hole • \$189 • 601101W
3 tap holes • \$219 • 601103W



RAK
CERAMICS

RAK COMPACT 550 Ceramic
550 x 410 x 195 mm
1 tap hole • \$215 • 601201W
3 tap holes • \$245 • 601203W



RAK
CERAMICS

RAK COMPACT SLIM Ceramic
450 x 215 x 180 mm
\$190 • 601301W



RAK
CERAMICS

RAK WASHINGTON Ceramic
560 x 420 x 200mm
1 tap hole • \$540 • 601501W
3 tap holes • \$570 • 601503W



RAK
CERAMICS

RAK WASHINGTON Ivory Ceramic
560 x 420 x 200mm
1 tap hole • \$699 • 601501I
3 tap holes • \$729 • 601503I



CHARLOTTE Ceramic
440 x 250 x 120 mm
\$160 • TR4523



RAK
CERAMICS

RAK LARA Ceramic
510 x 405 x 185 mm
1 tap hole • \$160 • 600101W
3 tap holes • \$190 • 600103W



RAK
CERAMICS

RAK LARA Ivory Ceramic
510 x 405 x 185 mm
1 tap hole • \$195 • 600101I
3 tap holes • \$225 • 600103I




Made in Italy

F50 LAVABO 700 Ceramic
700 x 480 x 130 mm
\$1299 • LAV70



Encanto

COLLECTION

Encanto is a sleek and contemporary collection of matte white cast stone solid surface basins that are available in various sizes and bowl positions, offering flexibility for any residential or commercial bathroom.



ENCANTO 470
1 tap hole • \$480 • CSB11-47
No tap hole • \$480 • CSB11-47-0



ENCANTO 700
Left-Hand Bowl
1 tap hole • \$699 • CSB11-70L
No tap hole • \$699 • CSB11-70L-0

ENCANTO 700
Right-Hand Bowl
1 tap hole • \$699 • CSB11-70R
No tap hole • \$699 • CSB11-70R-0



ENCANTO 1000
Centre Bowl
1 tap hole • \$899 • CSB11-100
No tap hole • \$899 • CSB11-100-0

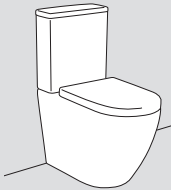


ENCANTO 1200
Left-Hand Bowl
1 tap hole • \$999 • CSB11-120L
No tap hole • \$999 • CSB11-120L-0

ENCANTO 1200
Centre Bowl
1 tap hole • \$999 • CSB11-120
No tap hole • \$999 • CSB11-120-0

TOILETS

TOILET SUITE DESIGNS



BACK-TO-WALL

These suites are designed with both the pan and cistern sitting flush against the wall. The design removes any gaps or crevices making it much easier to clean the external area of your toilet suite.



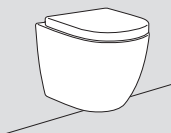
CLOSE-COUPLED

For a close-coupled suite, the cistern and pan are joined with an exposed area at the back of the pan. These suites are ideal for retrofit applications where the bottom inlet from the cistern needs to connect to an existing tap in the room.



ADJUSTABLE LINK

An adjustable link suite is similar to a close-coupled suite, but with an adjustable link connector that allows greater flexibility for renovation applications. The pipe link is adjustable so that the pan can be installed above existing pipework in the floor.



WALL-HUNG

Wall-hung suites are mounted on the wall with space between the pan and the floor. The cistern is enclosed in the wall for a minimalist design.



WALL-FACED

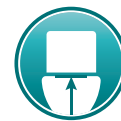
Wall-faced suites sit on the floor with their cisterns enclosed in the wall for a clean, tidy look.



RIMLESS HYGIENIC FLUSH PANS

Many Fienza suites come with a rimless hygienic flush pan design.

With rimless pans there is nowhere for bacteria or grime to build up, and makes the pan easier to clean. Flushing performance is also more efficient and washes the complete bowl.

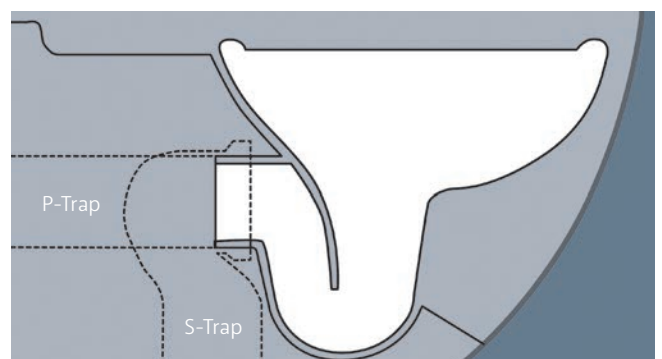


EXTRA HEIGHT PANS

With a little extra height, these toilet pans make it easier to get on and off the seat. Standard pan heights range from approximately 400-420 mm, while taller pans range from 440-455 mm high. Look for the Extra Height symbol on each page and find full specifications on our website: [fienza.com.au](https://www.fienza.com.au)

FLUSH PIPE INSTALLATIONS

There are two main types of flushing installations for any toilet suite: P-Trap and S-Trap. If your flush pipe needs to go through the wall, then a P-Trap would be suitable. Alternatively, an S-Trap allows for the flush pipe to go through the floor.



TOILET SUITE FEATURES



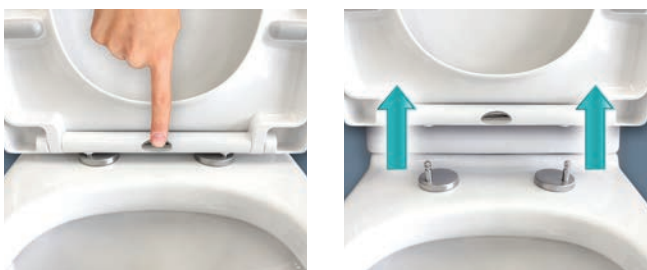
NANO-GLAZE PROTECTION

Nano-glaze is available on selected Fienza toilet suites. Nano-glaze is a technology that was originally developed by NASA. This is an incredibly fine, ultra-smooth barrier that coats the inner pan keeping it cleaner and protecting it from bacteria. Unlike some other toilet suites on the market, our nano-glaze covers the entire trap as well as the inner pan.



SOFT-CLOSE, QUICK RELEASE TOILET SEATS

The majority of our seats are soft-closing and feature a one-touch quick release mechanism, making cleaning a breeze. Open the lid to the upright position, press the button, and lift straight upwards to remove the seat completely. After cleaning, just click the seat back onto the stainless-steel pins on the pan.



HIGH QUALITY TOILET SEATS

Many of our toilet seats are made with Urea-formaldehyde (UF), which will not yellow, maintaining its bright white finish even if exposed in sunlight. UF provides a satisfying quality-feel, as it is heavier than polypropylene.



CUSTOMISE WITH ACCENTS

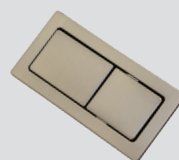
Many of our toilet suites can be customised with optional coloured flush buttons and seat hinge covers.

Flush Buttons

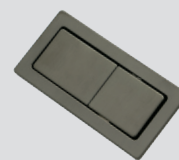
Suit selected back-to wall and close-coupled suites only
89 mm x 44 mm



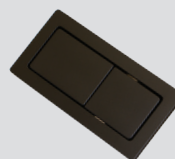
Chrome
\$30 • 200754



PVD Brushed Nickel
\$30 • 200784BN



PVD Gun Metal
\$45 • 200784GM



Matte Black
\$30 • 200784



PVD Urban Brass
\$45 • 200784UB

Matte Black Seat Hinge Covers

Suits selected back-to wall and close-coupled suites only.
Does not fit on slim seats.



50 mm Diameter
\$25 • 202069

Designed to match
matte black flush buttons



Back-To-Wall

TOILET SUITES



Ambulant Compliant



Rimless



Extra Height



Soft Close



Short Projection

ALIX Standard Seat

WELS 4 Star rated, 4.5L/3L (3.3L average flush)

P-Trap • \$564 • K011P

S-Trap 90-160 • \$599 • K011A

S-Trap 160-230 • \$614 • K011B



Ambulant Compliant



Rimless



Extra Height



Soft Close



Short Projection

ALIX Slim Seat

WELS 4 Star rated, 4.5L/3L (3.3L average flush)

P-Trap • \$594 • K011P-2

S-Trap 90-160 • \$629 • K011A-2

S-Trap 160-230 • \$644 • K011B-2



Rimless



Soft Close

LUCIANA®

WELS 4 Star rated, 4.5L/3L (3.3L average flush)

P-Trap • \$564 • K1343P

S-Trap 90-160 • \$599 • K1343A

S-Trap 160-230 • \$614 • K1343B



Nano Glaze



Soft Close



Short Projection

EMPIRE Standard Seat

WELS 4 Star rated, 4.5L/3L (3.3L average flush)

- P-Trap • \$510 • K003P
- S-Trap 90-160 • \$545 • K003A
- S-Trap 160-230 • \$560 • K003B



Nano Glaze



Soft Close



Short Projection

EMPIRE Slim Seat

WELS 4 Star rated, 4.5L/3L (3.3L average flush)

- P-Trap • \$525 • K003P-2
- S-Trap 90-160 • \$560 • K003A-2
- S-Trap 160-230 • \$575 • K003B-2



Nano Glaze



Rimless



Soft Close



Extra Height

DELTA

WELS 4 Star rated, 4.5L/3L (3.3L average flush)

- P-Trap • \$564 • K005P
- S-Trap 90-160 • \$599 • K005A
- S-Trap 160-230 • \$614 • K005B



Rimless



Soft Close

KOKO® Standard Seat

WELS 4 Star rated, 4.5L/3L (3.3L average flush)

- P-Trap • \$514 • K002P
- S-Trap 90-160 • \$549 • K002A
- S-Trap 160-230 • \$564 • K002B



Rimless



Soft Close

KOKO® Matte White

WELS 4 Star rated, 4.5L/3L (3.3L average flush)

- P-Trap • \$999 • K002MWP
- S-Trap 90-160 • \$1034 • K002MWA
- S-Trap 160-230 • \$1049 • K002MWB



Rimless



Soft Close

KOKO® Slim Seat

WELS 4 Star rated, 4.5L/3L (3.3L average flush)

- P-Trap • \$539 • K002P-2
- S-Trap 90-160 • \$574 • K002A-2
- S-Trap 160-230 • \$589 • K002B-2



Rimless



Soft Close

ISABELLA

WELS 4 Star rated, 4.5L/3L (3.3L average flush)

- P-Trap • \$495 • K014P
- S-Trap 90-160 • \$530 • K014A
- S-Trap 160-230 • \$545 • K014B



Rimless



Soft Close

ISABELLA SLIM SEAT

WELS 4 Star rated, 4.5L/3L (3.3L average flush)

- P-Trap • \$525 • K014P-2
- S-Trap 90-160 • \$560 • K014A-2
- S-Trap 160-230 • \$575 • K014B-2



Soft Close

MARIA

WELS 4 Star rated, 4.5L/3L (3.4L average flush)

- P-Trap • \$395 • K1213P
- S-Trap 90-160 • \$430 • K1213A
- S-Trap 160-230 • \$445 • K1213B



Rimless



Extra Height



Soft Close

RAK
CERAMICS

RAK RESORT

WELS 4 Star rated, 4.5L/3L (3.3L average flush)

Bottom inlet, P-Trap • \$765 • 385447W

Bottom inlet, S-Trap 90-200 • \$795 • 385447WA

Top inlet, P-Trap • \$765 • 406047W

Top inlet, S-Trap 90-200 • \$795 • 406047WA



Soft Close

RAK
CERAMICS

RAK MOON

WELS 4 Star rated, 4.5L/3L (3.3L average flush)

P-Trap • \$1030 • 473546W

S-Trap 90-140 • \$1065 • 473546WA



Rimless



Soft Close

RAK
CERAMICS

RAK MORNING

WELS 4 Star rated, 4.5L/3L (3.3L average flush)

Bottom inlet, P-Trap • \$589 • 576139W

Bottom inlet, S-Trap 150 • \$649 • 576139WA

Top inlet, P-Trap • \$589 • 586239W

Top inlet, S-Trap 150 • \$649 • 586239WA



Extra Height



Soft Close



Ambulant Compliant

RAK
CERAMICS

RAK COMPACT

WELS 4 Star rated, 4.5L/3L (3.3L average flush)

P-Trap • \$549 • 345130W

S-Trap 70-160 • \$584 • 345130WA

S-Trap 160-210 • \$599 • 345130WB

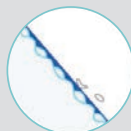
RAK-PROTEK

Antibacterial and Hygienic Glaze

RAK-ProTeK is the innovative ceramic glaze developed to protect wash basins, toilets and urinals, making them more hygienic and easier to clean. RAK-ProTeK, which is baked into the ceramic during firing, results in a smoother surface, unlike standard ceramic with an irregular surface. This feature allows the particles accumulating on the ceramic to easily slip away making cleaning more efficient and convenient. The silver ions contained in this revolutionary glaze, kill 99.9% of bacteria in 24 hours and prevent the bacterial growth, in comparison to conventional ceramic glazing. RAK-ProTeK has been tested by Artest laboratory from the Italian Ceramic district in Modena.



Standard Glaze



RAK-ProTeK



RAK-ProTek



Rimless



Soft Close

RAK
CERAMICS

RAK SENSATION

WELS 4 Star rated, 4.5L/3L (3.4L average flush)

P-Trap • \$799 • 616426W

S-Trap 100-120 • \$859 • 616426WA



Adjustable Link TOILET SUITES



STELLA

WELS 4 Star rated, 4.5L/3L (3.3L average flush)
S-Trap 140-255 • \$299 • K001



Extra Height

STELLA SENIOR

WELS 4 Star rated, 4.5L/3L (3.3L average flush)
S-Trap 300-340 • \$430 • K0015



Soft Close

Modern-Vintage
COLLECTION

RAK WASHINGTON Front Lever

WELS 4 Star rated, 4.5L/3L (3.4L average flush)
P-Trap • \$1399 • 870630W
S-Trap 270-320 • \$1399 • 870630WA



Junior

STELLA JUNIOR

WELS 4 Star rated, 4.5L/3L (3.3L average flush)
S-Trap 180-230 • \$465 • K001J

Close-Coupled TOILET SUITES

NEW



Soft Close

*Modern
Vintage*
COLLECTION



RAK WASHINGTON
Front Lever

WELS 4 Star rated, 4.5L/3L
(3.4L average flush)

P-Trap • \$1035 • 070130WS

S-Trap 240 • \$1035 • 060130WS

*Modern
Vintage*
COLLECTION



Soft Close

RAK WASHINGTON White

WELS 4 Star rated, 4.5L/3L (3.4L average flush)

P-Trap • \$849 • 070130W

S-Trap 240 • \$849 • 060130W



Soft Close

RAK WASHINGTON Ivory

WELS 4 Star rated, 4.5L/3L (3.4L average flush)

P-Trap • \$999 • 070122I

S-Trap 240 • \$999 • 060122I



Rimless



Extra Height



Soft Close

STELLA

WELS 4 Star rated, 4.5L/3L (3.1L average flush)

P-Trap • \$320 • K009P

S-Trap • \$320 • K009



Soft Close

RAK LIWA White

WELS 4 Star rated, 4.5L/3L (3.3L average flush)

P-Trap • \$370 • 222730W

S-Trap 140 • \$370 • 122730W

S-Trap 240 • \$370 • 322730W

RAK
CERAMICS



Soft Close

RAK LIWA Ivory

WELS 4 Star rated, 4.5L/3L (3.3L average flush)

P-Trap • \$540 • 222722I

S-Trap 140 • \$540 • 122722I

RAK
CERAMICS



Rimless



Soft Close

CHICA

WELS 4 Star rated, 4.5L/3L (3.2L average flush)

P-Trap • \$395 • K0123P

S-Trap 90-160 • \$430 • K0123A

S-Trap 160-230 • \$445 • K0123B



REBA Gloss White Above Counter Basin
360 x 360 x 120 mm
\$199 • RB3134

RAK WASHINGTON White
Close-Coupled Toilet
WELS 4 Star rated, 4.5L/3L (3.4L average flush)
P-Trap • \$849 • 070130W
S-Trap 240 • \$849 • 060130W

Modern Vintage
COLLECTION



Wall-Hung TOILET SUITES

CONCEALED CISTERNS



■ GEBERIT

Designed in Switzerland • Made in Germany



GEBERIT SIGMA Duofix 8 In-Wall Cistern and Frame for Wall-Hung Pan

\$940 • 111-698-00-1

R&T



R&T In-Wall Cistern and Frame for Wall-Hung Pan

\$500 • G30031



GEBERIT KAPPA Duofix Under-Counter Cistern and Frame for Wall-Hung Pan

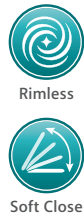
\$940 • 111-263-00-1-KIT

Includes Sigma adaptor. Must be installed at rough in. Only for use with Sigma flush plate, see page 33.

FLUSH PLATES ALSO REQUIRED



See matching Geberit and R&T Flush Plates on page 33



KOKO® Gloss White
 WELS 4 Star rated, 4.5L/3L (3.5L average flush)
 Pan and Seat • \$399* • K2376W-PS
 *Cistern and flush plate required (not included in price).



KOKO® Gloss Black
 WELS 4 Star rated, 4.5L/3L (3.5L average flush)
 Pan and Seat • \$499* • K2376B-PS
 *Cistern and flush plate required (not included in price).

CISTERN KITS

With a GEBERIT SIGMA Duofix 8
 In-Wall Cistern and Frame
 \$1399 • K2376W-GE

With an R&T
 In-Wall Cistern and Frame
 \$899 • K2376W-RT

With a GEBERIT KAPPA Duofix
 Under-Counter Cistern and Frame
 \$1399 • K2376W-GK

CISTERN KITS

With a GEBERIT SIGMA Duofix 8
 In-Wall Cistern and Frame
 \$1499 • K2376B-GE

With an R&T
 In-Wall Cistern and Frame
 \$999 • K2376B-RT

With a GEBERIT KAPPA Duofix
 Under-Counter Cistern and Frame
 \$1499 • K2376B-GK



KOKO® Matte White
 WELS 4 Star rated, 4.5L/3L (3.5L average flush)
 Pan and Seat • \$699* • K2376MW-PS
 *Cistern and flush plate required (not included in price).



KOKO® Matte Black
 WELS 4 Star rated, 4.5L/3L (3.5L average flush)
 Pan and Seat • \$799* • K2376MB-PS
 *Cistern and flush plate required (not included in price).

CISTERN KITS

With a GEBERIT SIGMA Duofix 8
 In-Wall Cistern and Frame
 \$1699 • K2376MW-GE

With an R&T
 In-Wall Cistern and Frame
 \$1199 • K2376MW-RT

With a GEBERIT KAPPA Duofix
 Under-Counter Cistern and Frame
 \$1699 • K2376MW-GK

CISTERN KITS

With a GEBERIT SIGMA Duofix 8
 In-Wall Cistern and Frame
 \$1799 • K2376MB-GE

With an R&T
 In-Wall Cistern and Frame
 \$1299 • K2376MB-RT

With a GEBERIT KAPPA Duofix
 Under-Counter Cistern and Frame
 \$1799 • K2376MB-GK



Wall-Faced TOILET SUITES

CONCEALED CISTERNS

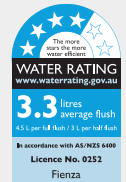


Designed in Switzerland • Made in Germany



GEBERIT SIGMA 8 In-Wall Cistern
for Floor-Mounted/Wall-Faced Pan

\$510 • 109-795-00-1



R&T In-Wall Cistern
for Floor-Mounted/Wall-Faced Pan

\$280 • G30032

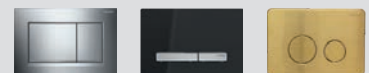


GEBERIT KAPPA Under-Counter Cistern
for Floor-Mounted/Wall-Faced Pan

\$510 • 224-368-00-1-KIT

Includes Sigma adaptor. Must be installed at rough in.
Only for use with Sigma flush plate, see page 33.

FLUSH PLATES
ALSO REQUIRED



See matching Geberit and R&T
Flush Plates on page 33



Rimless



Soft Close

KOKO® Gloss White

WELS 4 Star rated, 4.5L/3L (3.5L average flush)

P-Trap Pan and Seat • \$399* • K002376-PS

S-Trap Pan and Seat • \$449* • K002376A-PS

*Cistern and flush plate required (not included in price).



Rimless



Soft Close

KOKO® Gloss Black

WELS 4 Star rated, 4.5L/3L (3.5L average flush)

P-Trap Pan and Seat • \$499* • K002376B-PS

S-Trap Pan and Seat • \$549* • K002376BA-PS

*Cistern and flush plate required (not included in price).

CISTERN KITS

With a GEBERIT SIGMA 8 In-Wall Cistern

P-Trap • \$909 • K002376-GE

S-Trap • \$959 • K002376A-GE

With a R&T In-Wall Cistern

P-Trap • \$679 • K002376-RT

S-Trap • \$729 • K002376A-RT

With a GEBERIT KAPPA Under-Counter Cistern

P-Trap • \$909 • K002376-GK

S-Trap • \$959 • K002376A-GK

CISTERN KITS

With a GEBERIT SIGMA 8 In-Wall Cistern

P-Trap • \$1009 • K002376B-GE

S-Trap • \$1059 • K002376BA-GE

With an R&T In-Wall Cistern

P-Trap • \$729 • K002376B-RT

S-Trap • \$779 • K002376BA-RT

With a GEBERIT KAPPA Under-Counter Cistern

P-Trap • \$1009 • K002376B-GK

S-Trap • \$1059 • K002376BA-GK



Rimless



Soft Close

KOKO® Matte White

WELS 4 Star rated, 4.5L/3L (3.5L average flush)

P-Trap Pan and Seat • \$699* • K002376MW-PS

S-Trap Pan and Seat • \$749* • K002376MWA-PS

*Cistern and flush plate required (not included in price).



Rimless



Soft Close

KOKO® Matte Black

WELS 4 Star rated, 4.5L/3L (3.5L average flush)

P-Trap Pan and Seat • \$799* • K002376MB-PS

S-Trap Pan and Seat • \$849* • K002376MBA-PS

*Cistern and flush plate required (not included in price).

CISTERN KITS

With a GEBERIT SIGMA 8 In-Wall Cistern

P-Trap • \$1209 • K002376MW-GE

S-Trap • \$1259 • K002376MWA-GE

With an R&T In-Wall Cistern

P-Trap • \$979 • K002376MW-RT

S-Trap • \$1029 • K002376MWA-RT

With a GEBERIT KAPPA Under-Counter Cistern

P-Trap • \$1209 • K002376MW-GK

S-Trap • \$1259 • K002376MWA-GK

CISTERN KITS

With a GEBERIT SIGMA 8 In-Wall Cistern

P-Trap • \$1309 • K002376MB-GE

S-Trap • \$1359 • K002376MBA-GE

With an R&T In-Wall Cistern

P-Trap • \$1079 • K002376MB-RT

S-Trap • \$1129 • K002376MBA-RT

With a GEBERIT KAPPA Under-Counter Cistern

P-Trap • \$1309 • K002376MB-GK

S-Trap • \$1359 • K002376MBA-GK



Soft Close

LAMBADA

WELS 4 Star rated, 4.5L/3L (3.5L average flush)

P-Trap Pan and Seat • \$399* • K0223-PS

S-Trap Pan and Seat • \$449* • K0223A-PS

*Cistern and flush plate required (not included in price).



Rimless



Soft Close

RAK RESORT

WELS 4 Star rated, 4.5L/3L (3.5L average flush)

P-Trap Pan and Seat • \$545* • 840047W

S-Trap pan not available

*Cistern and flush plate required (not included in price).

RAK
CERAMICS

CISTERN KITS

With a GEBERIT SIGMA 8 In-Wall Cistern

P-Trap • \$909 • K0223-GE

S-Trap • \$959 • K0223A-GE

With an R&T In-Wall Cistern

P-Trap • \$679 • K0223-RT

S-Trap • \$729 • K0223A-RT

With a GEBERIT KAPPA Under-Counter Cistern

P-Trap • \$909 • K0223-GK

S-Trap • \$959 • K0223A-GK

CISTERN KITS

With a GEBERIT SIGMA 8

In-Wall Cistern

\$1045 • 847547W

With an R&T In-Wall Cistern

\$825 • 847747W

With a GEBERIT KAPPA

Under-Counter Cistern

\$1045 • 847647W



Rimless



Soft Close

RAK
CERAMICS

RAK SENSATION

WELS 4 Star rated, 4.5L/3L (3.4L average flush)

P-Trap Pan and Seat • \$859* • 880026W

S-Trap Pan and Seat • \$919* • 880026WA

*Cistern and flush plate required (not included in price).



Soft Close

RAK
CERAMICS

RAK METROPOLITAN

WELS 3 Star rated, 6L/3L (3.8L average flush)

P-Trap Pan and Seat • \$440* • 510048W

Please note: WELS 3 Star rated toilets can only be used for renovation/replacement only.

*Cistern and flush plate required (not included in price).

CISTERN KITS

With a GEBERIT SIGMA 8 In-Wall Cistern

P-Trap • \$1369 • 887526W

S-Trap • \$1429 • 887526WA

With an R&T In-Wall Cistern

P-Trap • \$1139 • 887726W

S-Trap • \$1199 • 887726WA

With a GEBERIT KAPPA Under-Counter Cistern

P-Trap • \$1369 • 887626W

S-Trap • \$1429 • 887626WA

CISTERN KITS

With a GEBERIT SIGMA 8

In-Wall Cistern

\$940 • 517548W

With an R&T In-Wall Cistern

\$720 • 517748W

With a GEBERIT KAPPA

Under-Counter Cistern

\$940 • 517648W

Flush Plates

■ GEBERIT

Designed in Switzerland • Made in Europe

STANDARD (Stocked Items)



Round Chrome,
Matte Chrome Trim
ABS Construction
\$230 • SIG20-C



Round Matte Chrome,
Chrome Trim
ABS Construction
\$230 • SIG20-S



Round Brushed
Chrome, Chrome Trim
Stainless Steel
\$399 • SIG20-BSS



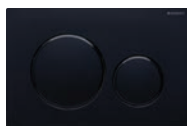
Round Matte White,
Chrome Trim
ABS Construction
\$230 • SIG20-MW



Round Matte White,
White Trim
ABS Construction
\$230 • SIG20-WH



Round Matte Black,
Chrome Trim
ABS Construction
\$230 • SIG20-MB



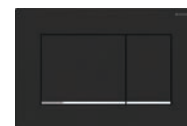
Round Matte Black,
Black Trim
ABS Construction
\$230 • SIG20-BL



Rectangular Chrome,
Matte Chrome Trim
ABS Construction
\$190 • SIG30-C

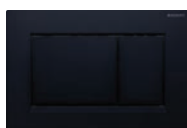


Rectangular Matte
White, White Trim
ABS construction
\$230 • SIG30-WH



Rectangular Matte
Black, Chrome Trim
ABS Construction
\$230 • SIG30-MB

SIGMA 21 (Special Order - 1 week lead time)



Rectangular Matte
Black, Black Trim
ABS Construction
\$230 • SIG30-BL



Round White,
Chrome Trim
Premium Glass
\$430 • SIG21-W



Round Black,
Chrome Trim
Premium Glass
\$430 • SIG21-B



Rectangular White,
Brushed Chrome Buttons
Premium Glass and Metal
\$430 • SIG50-W



Rectangular Black,
Brushed Chrome Buttons
Premium Glass and Metal
\$430 • SIG50-B

SIGMA 50 (Special Order - 1 week lead time)

R&T



Chrome
ABS Construction
\$149 • JB11-C



Matte Black
ABS Construction
\$149 • JB11-MB



Round Stainless Steel
Stainless Steel
\$199 • JB11



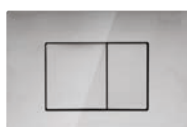
Round Brushed Nickel
Stainless Steel, PVD Finish
\$399 • JB11BN



Round Gun Metal
Stainless Steel, PVD Finish
\$399 • JB11GM



Round Urban Brass
Stainless Steel, PVD Finish
\$399 • JB11UB



Chrome
ABS Construction
\$120 • JB60C



Matte Black
ABS Construction
\$149 • JB60B



Gloss White
ABS Construction
\$149 • JB60W



Acrylic BATHS

Acrylic baths are an economical way to get the style you want for a fraction of the cost. With our high-quality materials and stunning styles there are several options for spaces big and small.

ACRYLIC WITH LUCITE MMA

Compared to standard acrylics this material is stronger and straighter, giving our modern styles a crisp, flawless design. This material is UV stabilised to prevent yellowing over time and is manufactured with a gloss or matte finish.

EASY INSTALLATION & SETUP

Our acrylic baths have an in-built metal support frame and adjustable legs for precise installation.

CUSTOMISE WITH ACCENTS

All acrylic baths come with a chrome waste as standard. If you want to customise the look, select from our coloured pop-out/pull-out wastes below.



Gloss White
No Overflow
\$80 • WAS79GW
With Overflow
\$80 • WAS78GW



Matte White
No Overflow
\$80 • WAS79MW
With Overflow
\$80 • WAS78MW



Matte Black
No Overflow
\$80 • WAS79MB
With Overflow
\$80 • WAS78MB



10-Year Warranty on Structural Integrity and Gloss Finishes



1-Year Warranty on Matte Finishes

Visit [fienza.com.au](https://www.fienza.com.au) for full warranty terms and conditions.

Freestanding ACRYLIC BATHS



EMPIRE

1400 x 720 x 590 mm • \$1499 • FR18-1400
 1500 x 750 x 600 mm • \$1499 • FR18-1500
 1700 x 800 x 600 mm • \$1499 • FR18-1700



Lucite MMA



Waste Included



No Overflow



KOKO® Matte White

1500 x 720 x 580 mm • \$2200 • FR11572
 1680 x 720 x 580 mm • \$2200 • FR11775



Lucite MMA



Waste Included



No Overflow



PAOLA

1500 x 750 x 680 mm
 \$1649 • FR11



Lucite MMA



Waste Included



No Overflow



CLAWFOOT OVERFLOW RINGS Chrome overflow included with bath



Semi-Gloss White • \$15
OVERFLOW-FR2550W



Matte Black • \$15
OVERFLOW-FR2550B



CLAWFOOT

With Chrome Feet

1500 x 750 x 815 mm • \$1549 • FR2550-1500C
1700 x 780 x 795 mm • \$1549 • FR2550-1700C



With Semi-Gloss White Feet

1500 x 750 x 815 mm • \$1649 • FR2550-1500W
1700 x 780 x 795 mm • \$1649 • FR2550-1700W



With Matte Black Feet

1500 x 750 x 815 mm • \$1649 • FR2550-1500B
1700 x 780 x 795 mm • \$1649 • FR2550-1700B



Lucite MMA



Waste Included



Overflow



ATHENIA

1700 x 760 x 600 mm
\$1749 • FR15675



Lucite MMA



Waste Included



No Overflow

Back-To-Wall

ACRYLIC BATHS



DELTA 1500
1500 x 750 x 600 mm
\$1639 • FR13572



Lucite MMA



Waste Included



No Overflow



DELTA 1700
1700 x 750 x 600 mm
\$1699 • FR8773



Lucite MMA



Waste Included



No Overflow



KEETO
1500 x 780 x 580 mm • \$1624 • FR65-1500
1700 x 800 x 580 mm • \$1749 • FR65-1700



Lucite MMA



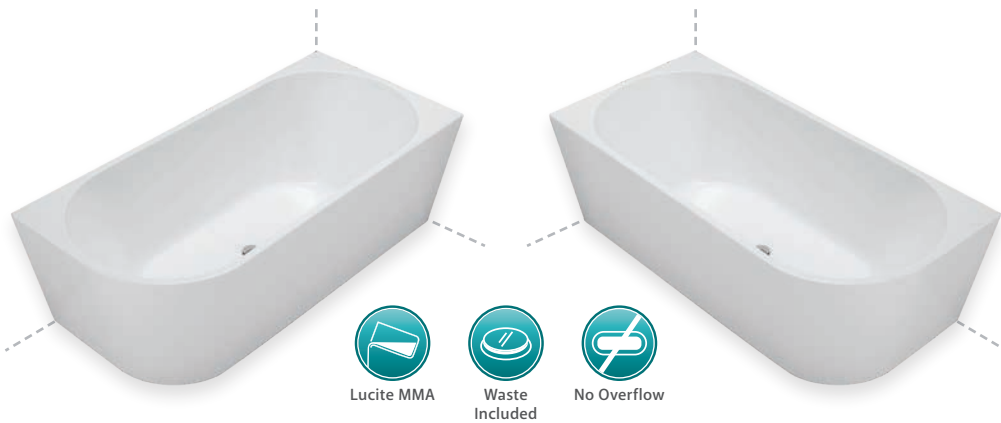
Waste Included



No Overflow



Corner ACRYLIC BATHS



Lucite MMA



Waste Included



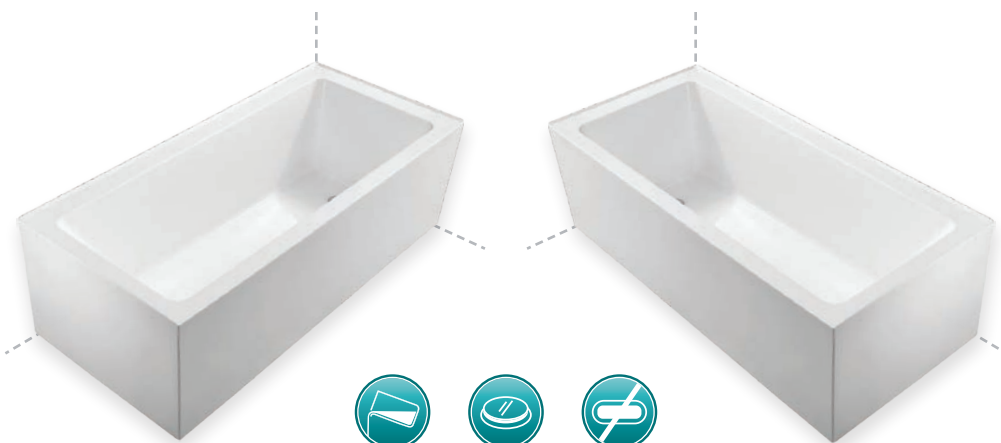
No Overflow

ISABELLA Left-Hand

1500 x 750 x 600 mm • \$1649 • FR67-1500L
1700 x 780 x 600 mm • \$1699 • FR67-1700L

ISABELLA Right-Hand

1500 x 750 x 600 mm • \$1649 • FR67-1500R
1700 x 780 x 600 mm • \$1699 • FR67-1700R



Lucite MMA



Waste Included



No Overflow

SENTOR Left-Hand

1500 x 750 x 525 mm • \$1399 • FR02-1500L
1650 x 750 x 525 mm • \$1399 • FR02-1650L

SENTOR Right-Hand

1500 x 750 x 525 mm • \$1399 • FR02-1500R
1650 x 750 x 525 mm • \$1399 • FR02-1650R

Resin Stone

BATHS

Our unique Resin-Stone formula provides a lighter version of a cast stone solid surface bath giving you cast stone quality and feel for less.

DURABLE, WHITE FINISH

Our special material does not crack or turn yellow over time like some cheaper alternatives on the market and each bath comes with an industry leading 25-year structural warranty.

EASY TO MANOEUVRE

The lightweight resin stone models only require two people to lift, saving time and money on transportation and installation.

CHROME POP-UP WASTES

Each Fienza resin stone bath comes with a chrome waste.



25-Year Warranty on Structural Integrity



5-Year Warranty on Finish

Visit fienza.com.au for full warranty terms and conditions.

NEW



KAYA® Lightweight

1500 x 750 x 575 mm • \$3300 • SS350
1700 x 800 x 575 mm • \$3600 • SS350-1700



Waste Included



No Overflow



ENCANTO

1700 x 700 x 600 mm
\$3600 • SS07



Waste Included



No Overflow

Cast Stone

BATHS

The ultimate in luxury, cast stone solid surface baths provide that resort-look and quality feel to enhance your everyday living. Elevate your bathroom with a unique style from our extensive range.

VELVET-SMOOTH MATTE FINISHES

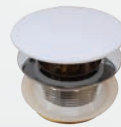
Our cast stone solid surface baths are manufactured to the highest standards with a velvet-smooth matte finish. For baths with a white finish, the surface can be sanded and refinished as new.

DURABLE, SOLID SURFACE MATERIAL

Made with our specially formulated cast stone solid surface material, our baths do not crack or turn yellow over time like other alternatives on the market.

STYLISH POP-UP WASTES

Each Fienza cast stone bath comes with a chrome waste included. If you want to customise your look, select from matte white or matte black waste upgrades.



Matte White
40mm, No Overflow • \$80 • WAS56W
40mm, With Overflow • \$80 • WAS57W



Matte Black
40mm, No Overflow • \$80 • WAS56B
40mm, With Overflow • \$80 • WAS57B



25-Year Warranty
on Structural Integrity



5-Year Warranty
on Finish

Visit [fienza.com.au](https://www.fienza.com.au) for full warranty terms and conditions.



BAHAMA Matte White

1500 x 760 x 540 mm

With Overflow • \$3450 • ST03-1500

1685 x 885 x 560 mm

With Overflow • \$3750 • ST03

No Overflow • \$3600 • ST03NO



Waste Included



Overflow



No Overflow



BAHAMA Matte Black

1700 x 840 x 545 mm

\$5200 • ST03-MB



Waste Included



Overflow



ANTONIA

1550 x 780 x 580 mm

With Overflow • \$3300 • ST19

No Overflow • \$3100 • ST19NO



Waste Included



Overflow



No Overflow



HIGH RISE
1500 x 680 x 560 mm
\$3500 • ST05



Waste Included



Overflow



MARISSA
1700 x 720 x 560 mm
\$3900 • ST18



Waste Included



Overflow



NERO
1400 x 700 x 520 mm
With Overflow • \$3050 • ST12-1400
No Overflow • \$2900 • ST12-1400NO
1550 x 770 x 520 mm
With Overflow • \$3150 • ST12-1550
1780 x 880 x 520 mm
With Overflow • \$3900 • ST12



Waste Included



Overflow



No Overflow



LUCIANA® Matte Black

1500 x 750 x 550 mm • \$4800 • ST11-B
 1690 x 800 x 550 mm • \$4950 • ST11-1700B



Waste Included



Overflow



LAGOONA

1810 x 930 x 520 mm
 \$4000 • ST04



Waste Included



Overflow



LEXY

1600 x 750 x 600 mm
 \$3675 • ST01



Waste Included



Overflow



HAMPTON
1600 x 800 x 600 mm
\$4000 • ST17



Waste Included



Overflow



LA VIDA
1690 x 750 x 880 mm
\$4500 • ST16



Waste Included



Overflow



SHINTO
1350 x 1350 x 490 mm
With Overflow • \$5000 • ST13
No Overflow • \$4800 • ST13NO



Waste Included



Overflow



No Overflow

Modern Vintage
COLLECTION

CAST STONE



NEW

RAK
CERAMICS



RAK WASHINGTON

1560 x 810 x 545 mm

Matte White • \$7500 • ST68

Matte Grey • \$7500 • ST68G

Matte Black • \$7500 • ST68B



Waste
Included



Overflow



Made
in Italy



KEETO Back-to-Wall Acrylic Bath

1500 x 780 x 580 mm • \$1624 • FR65-1500
1700 x 800 x 580 mm • \$1749 • FR65-1700

SARAH Semi-Inset Ceramic Basin

440 x 310 x 50 mm
\$199 • RB4071

KOKO® Back-to-Wall Toilet

Standard Seat

WELS 4 Star rated, 4.5L/3L (3.3L average flush)

P-Trap • \$514 • K002P

S-Trap 90-160 • \$549 • K002A

S-Trap 160-230 • \$564 • K002B

Optional Matte Black Flush Button

\$30 • 200784





®

fienza

Beautiful, quality *Bathware*

At Fienza our core passion is to excite customers with new, innovative and cutting-edge designer bathroom products.

Our commitment to international quality standards has ensured that Fienza continues to be the preferred choice for beautiful bathrooms all over Australia.

Fienza® products are available through all leading bathroom and plumbing retailers.

For more information, contact us or visit our website:

P (07) 3490 6700

E contactus@fienza.com.au

www.fienza.com.au

Retailer/Distributor:

CAT-S