

KOKOROS
KOKOROS
KOKOROS

MARINER

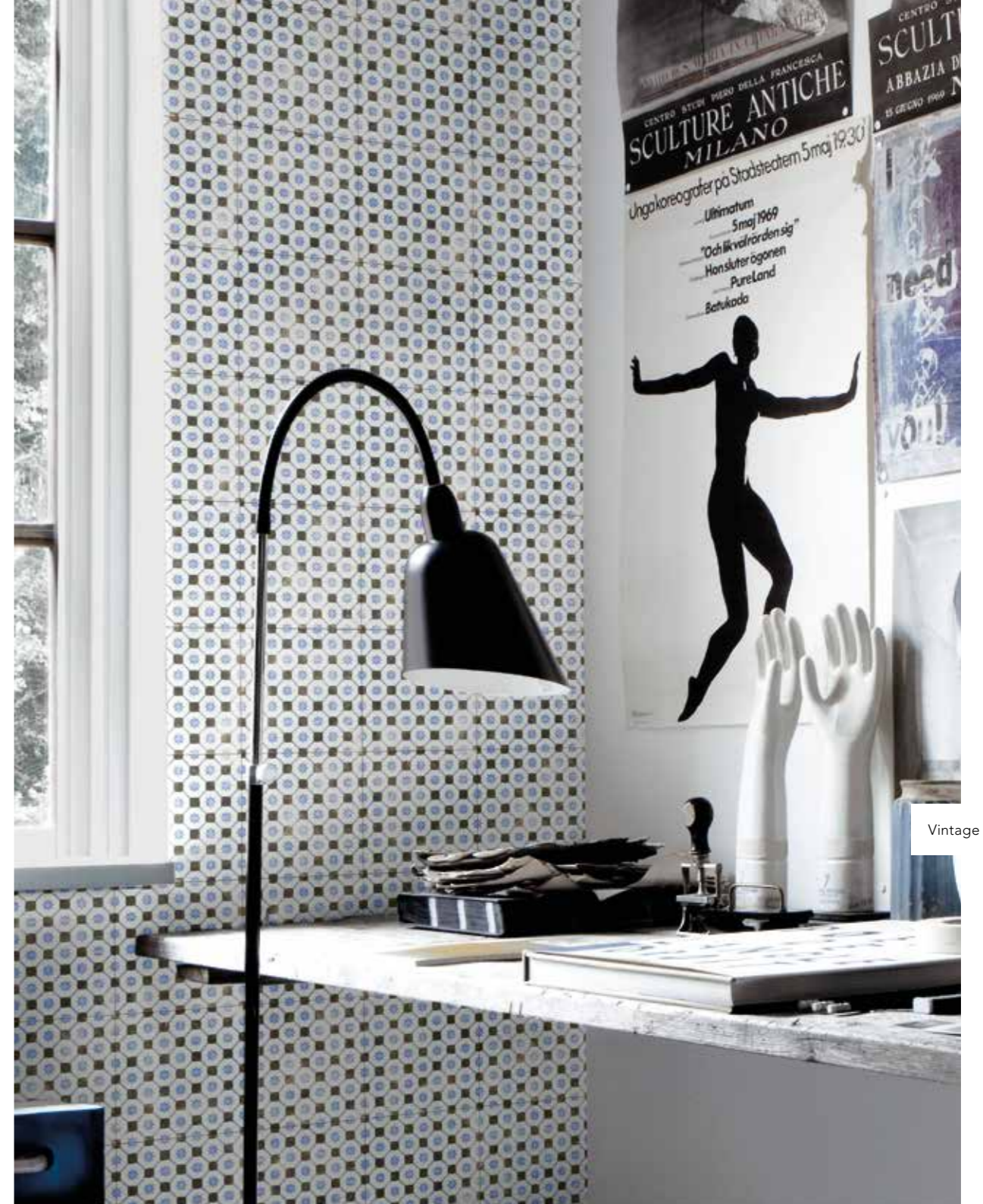
VINTAGE


MARINER

©2019 CERAMICHE MARINER S.P.A. Via Michelangelo 22, 42014 Castellarano (RE) Italia P. Iva 00731430351

V₂

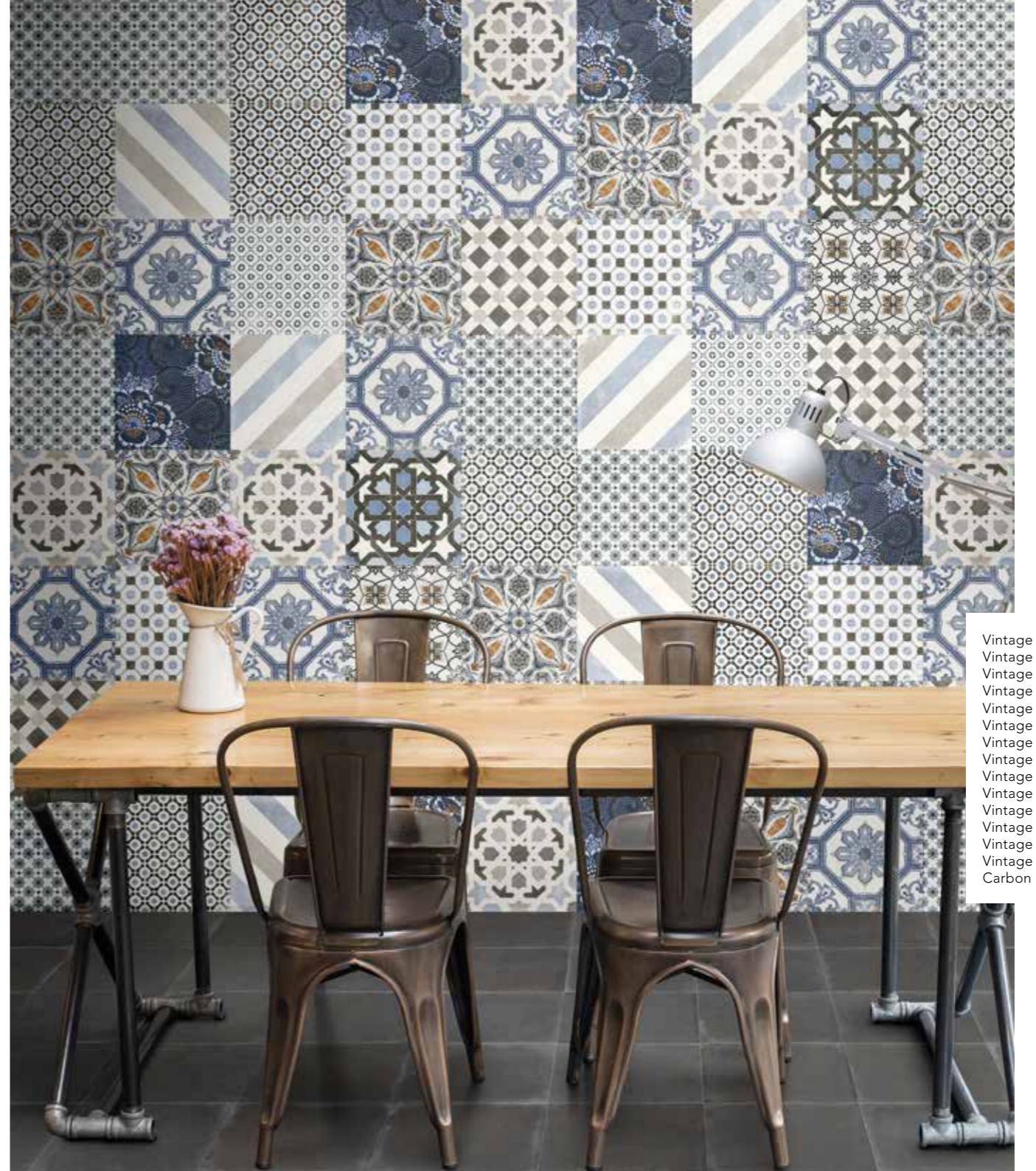
Vintage 12



Vintage 10



Vintage 5
Cloudy White/Bianco
Ocean Blue / Avio



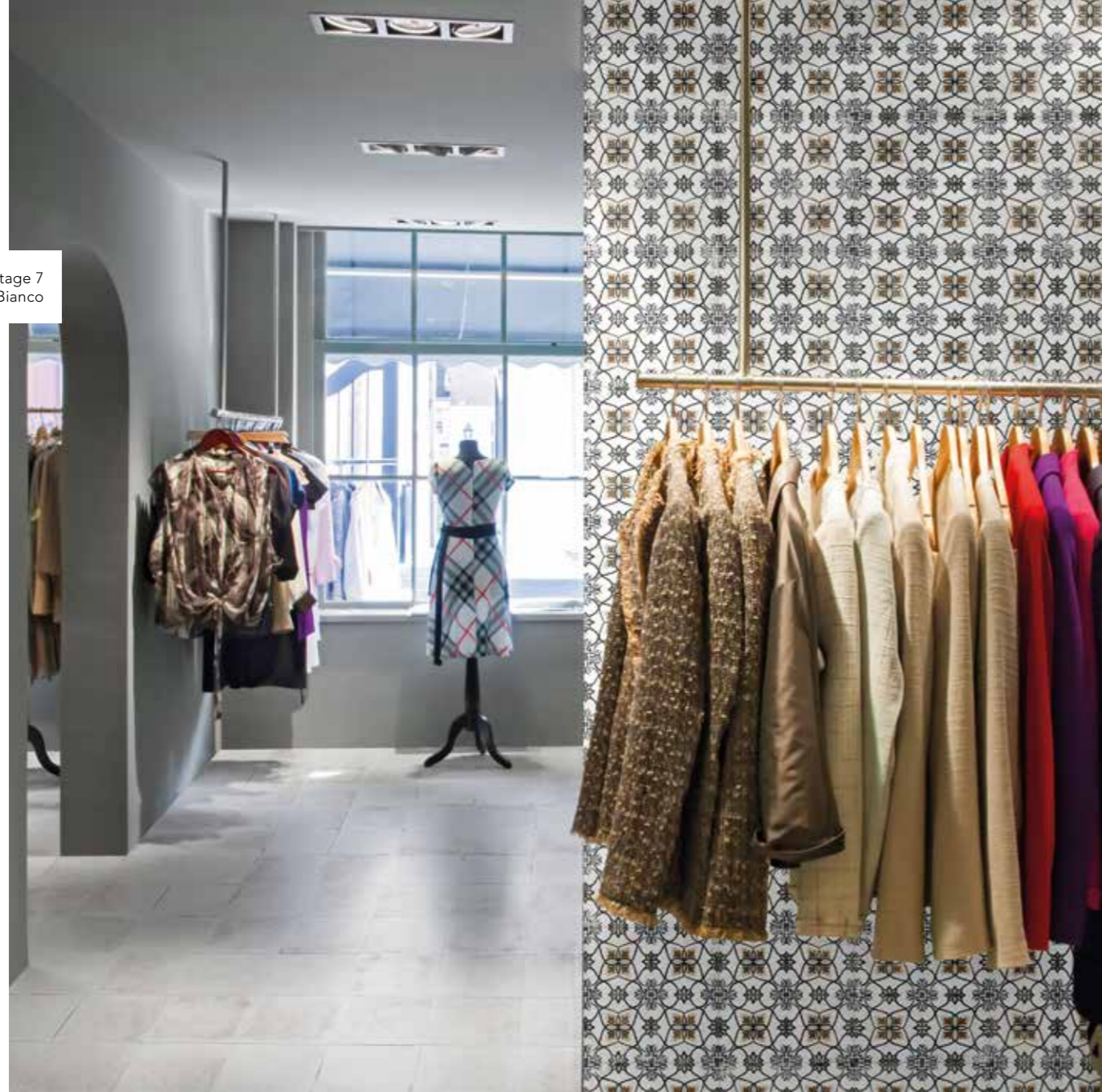
- Vintage 1
- Vintage 2
- Vintage 3
- Vintage 4
- Vintage 5
- Vintage 6
- Vintage 7
- Vintage 8
- Vintage 9
- Vintage 10
- Vintage 11
- Vintage 12
- Vintage 13
- Vintage 14
- Carbon Black/Nero



Vintage 1
Carbon Black/Nero

V8

Vintage 7
Cloudy White/Bianco

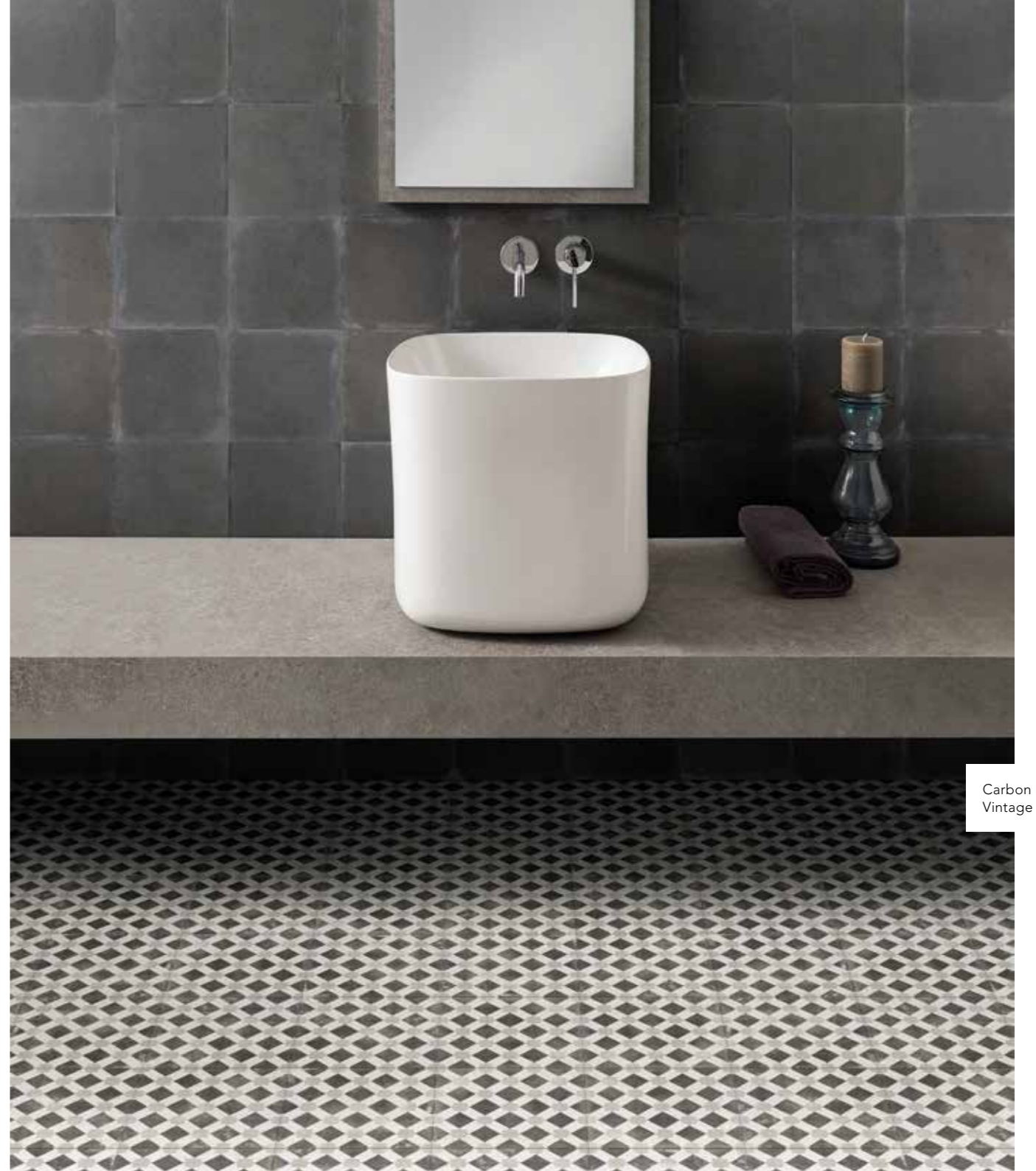


Vintage 9
Cloudy White/Bianco

Vintage 3
Vintage 4
Vintage 6
Vintage 10
Vintage 12
Vintage 14
Cloudy White/Bianco



Vintage 4
Cloudy White/Bianco
Ocean Blue / Avio



Carbon Black/Nero
Vintage 11

V₁₄

Vintage 14



Vintage 13
Carbon Black/Nero

V16

Vintage 16
Cloudy White/Bianco
Seafoam Green/Verde



Vintage 18
Carbon Black/Nero

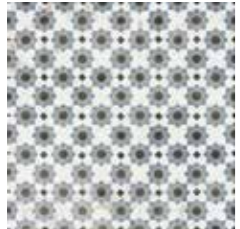
Vintage 15
Cloudy White/Bianco
Carbon Black/Nero



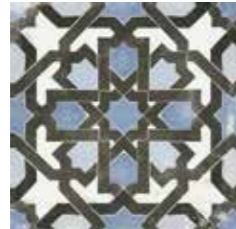
V₂₀

20X20 8"X8" GRES PORCELLANATO SMALTATO GLAZED PORCELAIN TILE
 SPESSORE 9,5 mm THICKNESS 0.38" INK JET DIGITAL TECHNOLOGY

VINTAGE



20x20 8"x8" **148**
VIN1 Vintage 1



20x20 8"x8" **148**
VIN2 Vintage 2



20x20 8"x8" **148**
VIN3 Vintage 3



20x20 8"x8" **148**
VIN4 Vintage 4



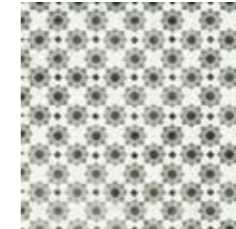
20x20 8"x8" **148**
VIN5 Vintage 5



20x20 8"x8" **148**
VIN15 Vintage 15



20x20 8"x8" **148**
VIN16 Vintage 16



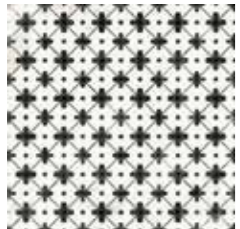
20x20 8"x8" **148**
VIN17 Vintage 17



20x20 8"x8" **148**
VIN18 Vintage 18



20x20 8"x8" **148**
VIN19 Vintage 19



20x20 8"x8" **148**
VIN6 Vintage 6



20x20 8"x8" **148**
VIN7 Vintage 7



20x20 8"x8" **148**
VIN8 Vintage 8



20x20 8"x8" **148**
VIN9 Vintage 9



20x20 8"x8" **148**
VIN10 Vintage 10

fondi field tile



20x20 8"x8" **145**
VINBI Cloudy White / Bianco



20x20 8"x8" **145**
VINGR Grey Mist / Grigio



20x20 8"x8" **145**
VINNE Carbon Black / Nero



20x20 8"x8" **145**
VINAV Ocean Blue / Avio



20x20 8"x8" **145**
VINVE Seafoam Green / Verde








	pcs/box	mq/box	kg/box	box/pallet	mq/pallet	kg/pallet
20x20 8"x8" Vintage	26	1,04	20,90	64	66,56	1337,60

	pcs/box	mq/box	kg/box	box/pallet	mq/pallet	kg/pallet
20x20 8"x8" Vintage	26	1,04	20,90	64	66,56	1337,60

VINTAGE

20x20 8"x8"

NORMA DI RIFERIMENTO SPECIFICATION REFERENCE EN 14411 appendice G Bla GL

CARATTERISTICHE TECNICHE TECHNICAL FEATURES	NORMA STANDARD	VALORE PRESCRITTO VALUE REQUIRED	VINTAGE	
DIMENSIONI - SIZE				
 ASSORBIMENTO ACQUA IN % % WATER ABSORPTION	EN ISO 10545/3 ASTM C 373	≤ 0,5 %	CONFORME COMPLY	
 RESISTENZA AGLI AGENTI CHIMICI A BASSA CONCENTRAZIONE CHEMICAL AGENTS RESISTANCE AT LOW CONCENTRATION	EN ISO 10545/13	VALORE DA DICHIARARE VALUE TO BE DECLARED	GLA	
	RESISTENZA AGLI AGENTI CHIMICI CHEMICAL AGENTS RESISTANCE	ASTM C 650	CLASS A - CLASS E	CLASS A
 RESISTENZA AI PRODOTTI CHIMICI DI USO DOMESTICO E AGLI ADDITIVI PER PISCINA - RESISTANCE TO DOMESTIC CHEMICAL PRODUCTS AND ADDITIVES FOR SWIMMING POOLS	EN ISO 10545/13	MINIMO GB MINIMUM GB	GA	
 RESISTENZA ALLO SCIVOLAMENTO SLIP RESISTANCE (ANTI-SLIP)	DCOF (ANSI A 137.1)	≥ 0,42	CONFORME COMPLY	
 RESISTENZA ALL'ABRASIONE ABRASION RESISTANCE	EN ISO 10545/7	VALORE DA DICHIARARE VALUE TO BE DECLARED	da 2 a 5 in base al colore from 2 to 5 according to color	
 RESISTENZA ALLA FLESSIONE (N/mm ²) FLEXURAL STRENGTH TEST (N/mm ²)	EN ISO 10545/4	SPESSORE ≤ 7,5 mm THICKNESS ≤ 7,5 mm	≥ 700 N	CONFORME COMPLY
		SPESSORE ≥ 7,5 mm THICKNESS ≥ 7,5 mm	≥ 1300 N	CONFORME COMPLY
	SFORZO DI ROTTURA (N) BREAKING STRENGTH (N)	ASTM C 648	AVERAGE ≥ 250 lbf INDIVIDUAL ≥ 225 lbf	CONFORME COMPLY
 RESISTENZA ALLE MACCHIE STAIN RESISTANCE	EN ISO 10545/14	≥ CLASSE 3	CONFORME COMPLY	
	ASTM C 1378	CLASS A - CLASS E	CLASS A	
 GRADO DI VARIAZIONE CROMATICA AESTHETIC CLASSES	ANSI A137.1	V0 - V4	V3	



Vintage 8