

Bathroom Brochure



Bringing bathrooms to life

Introducing Con-Serv

Versatile. Enduring. Inspiring.

Open your eyes to a world of water saving sophistication with Con-Serv products that offer intrinsic quality born of over 30 years experience in water conservation and design. Skills combined with innovative techniques and leading designs establish the enduring character for which Con-Serv is known. There is no substitute for the reliable performance or the authentic beauty of our lustre finishes that are remarkably resistant to scratching, corrosion and tarnishing. Con-Serv specialises in the design, manufacture and supply of bathroom, healthcare and plumbing products for domestic and commercial environments.

Saving Australia's Water

All Con-Serv handheld showers are 3 Star - 9L/min rated under the Water Efficiency Labelling and Standards (WELS) Scheme as per licence number 0046.

Our Promise

Con-Serv Corporation Australia Pty Ltd warrants all of its products (as below) with a Limited Lifetime Warranty on all mechanical parts from manufacturing defects in materials and workmanship under normal use in a domestic installation for as long as the original purchaser owns their home into which the particular product(s) was/were installed. A five year warranty (also on the terms below) will apply to commercial installations, irrespective of ownership.

Con-Serv will repair or replace defective items correctly installed as per the Con-Serv installation instructions. Con-Serv will not be liable for defects arising through normal wear and tear. Item(s) must be returned with proof of purchase to Con-Serv at 17 Glentanna Street, Kedron, Queensland 4031. We will attend to your warranty claim after we make appropriate investigations. Contact our Service Manager during normal office hours on 1300 467 322 or at our email address of warranty@con-serv.com.au. If a warranty claim is accepted, Con-Serv will bear the reasonable costs of the return of the defective item(s) to us. A claim for expenses associated with making a claim for a defective product must be in writing and submitted to us with copies of supporting documents. The benefits given under our warranty are in addition to other rights and remedies of the customer under a law in relation to goods and services to which this warranty relates. Our goods come with guarantees that cannot be excluded under the Australian Consumer Law. You are entitled to a replacement or a refund for a major failure and compensation for any other reasonable foreseeable loss or damage. You are also entitled to have the goods repaired or replaced if the goods fail to be of acceptable quality and the failure does not amount to a major failure. Visit the Con-Serv website www.con-serv.com.au for the detailed warranty policy.







Streamjet™ XL Turbo Pulsator



Streamjet™



Streamjet™ XL



Streamjet™ XL



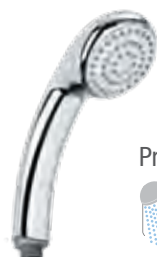
Streamjet™ Turbo Pulsator



Paddington



Streamjet™



Princess



Cosmic



Breeze Pulsator



Quewb



Quewb



Mix & Match

At Con-Serv we believe in giving you the flexibility to create a shower to suit your lifestyle. The choice of shower and colour are yours!

Choose your shower!

Select from our collection of handheld and overhead showers to suit your bathroom decor and spray preference.

Pick a finish ... pick a colour!

Choose from chrome, white or matte black finish. All finishes and colours shown are only approximations.

Finishes



Chrome



White



Matte Black



HS 020X
Polar Rail with
Streamjet™ XL
Chrome



HS 026J
Riviera Rail
with Streamjet™
Chrome

Rail showers

Our range of rail showers are easy to install and height adjustable making them the perfect choice when you need a flexible showering solution. Choose from a variety of rail options, and mix and match with any of our handpieces for a shower combination perfect for your needs.

Select your handpiece from our Streamjet™ XL Turbo Pulsator, Streamjet™ XL, Streamjet™ Turbo Pulsator, Streamjet™, Princess or Breeze Pulsator handheld showers. All Con-Serv handheld showers include a licenced dual check/non-return valve and are 3 Star - 9L/min rated as per WELS licence number 0046.



HS 010S
Crystal Rail with
Streamjet™ XL
Turbo Pulsator
Chrome



HS 014T
Comfort Rail with
Streamjet™ Turbo
Pulsator
Chrome

Handheld showers

A soothing water odyssey is yours with Con-Serv handheld showers. Minimalist beauty and high performance come together to create a variety of contemporary showers offering total rejuvenation while utilising the best in water conservation technology.

Mix and match Con-Serv showering components to create your customised showering environment. Select your handpiece from our Streamjet™ XL Turbo Pulsator, Streamjet™ XL, Streamjet™ Turbo Pulsator, Streamjet™, Princess or Breeze Pulsator handheld showers. All Con-Serv handheld showers include a licenced dual check/ non-return valve and are 3 Star - 9L/min rated as per WELS licence number 0046.



HS 011P
Wall Outlet Bracket
with Princess
Chrome



HS 013Z
Low Water Outlet with
Breeze Pulsator
Chrome

Quewb showers

The Quewb shower range takes the square look to the next dimension, combining minimalist beauty and bold square edge profiles utilising the best in water conservation technology. The Quewb offers a full body spray and is 3 Star - 9L/min rated as per WELS licence number 0046.



HS 010U
Quewb Slide Rail
Chrome



HS 011U
Quewb Handheld
Chrome



TW 029QU
Quewb Twin Waters™
Chrome



TW 030CX
Cosmic/Streamjet™ XL
Twin Waters™
Chrome

Twin Waters™ showers

Enjoy the best of both worlds with our dual outlet Twin Waters™ shower system that combines traditional overhead shower luxury with the flexibility of a hand shower. With top and bottom inlet options available, you can easily convert your bath or shower into a combination shower that will enhance any bathroom.

Select your handpiece from our Streamjet™ XL Turbo Pulsator, Streamjet™ XL, Streamjet™ Turbo Pulsator, Streamjet™, Princess or Breeze Pulsator handheld showers. All Con-Serv handheld showers include a licenced dual check/non-return valve and are 3 Star - 9L/min rated as per WELS licence number 0046.



TW 025PP
Paddington/Princess
Twin Waters™
Chrome



TW 025CZ
Cosmic/Breeze Pulsator
Twin Waters™
Chrome

Overhead showers

Con-Serv has perfected water saving technology to provide you with its diverse collection of overhead showers. From trendy minimalist designs to vandal proof functionality the range offers an extensive selection of arms. The Clicklock™ arm was developed from Con-Serv's unique adjustment technology to ensure the stable positioning of your shower. Select your overhead shower from Streamjet™, Streamjet™ XL, Paddington or Zodiac which are all 3 Star - 9L/min rated as per WELS licence number 0046.



OH 006B
Upswept Fixed Arm with Streamjet™
Chrome



OH 008G
Grand Arm with Streamjet™ XL
Chrome

Streamjet™ XL shower face with easy clean nozzles



OH 005E
Swan Neck Rising Arm
with Paddington
Chrome



OH 006C
Upswept Arm with
Streamjet™
Chrome



Clicklock™ Arm 360° Orbital Adjustment

Clicklock™ Arm Adjustment

OH 006D
Clicklock™ Orbital/Adjustable Arm
with Streamjet™
Chrome

Tamper Proof showers

A unique addition to the Con-Serv range of overhead showers are the vandal and tamper proof showers shown below. Each one is designed to enhance the safety and security of any bathroom. Vandal and tamper proof showers are 3 Star - 7.5L/min rated and 3 Star - 9L/min rated as per WELS licence number 0046.



CS 009
Vanguard
Chrome



CS 008
Pioneer
Chrome



CS 061
Zodiac
Chrome



OH 030Q
Quewb Swivel Crane Neck Arm
Chrome



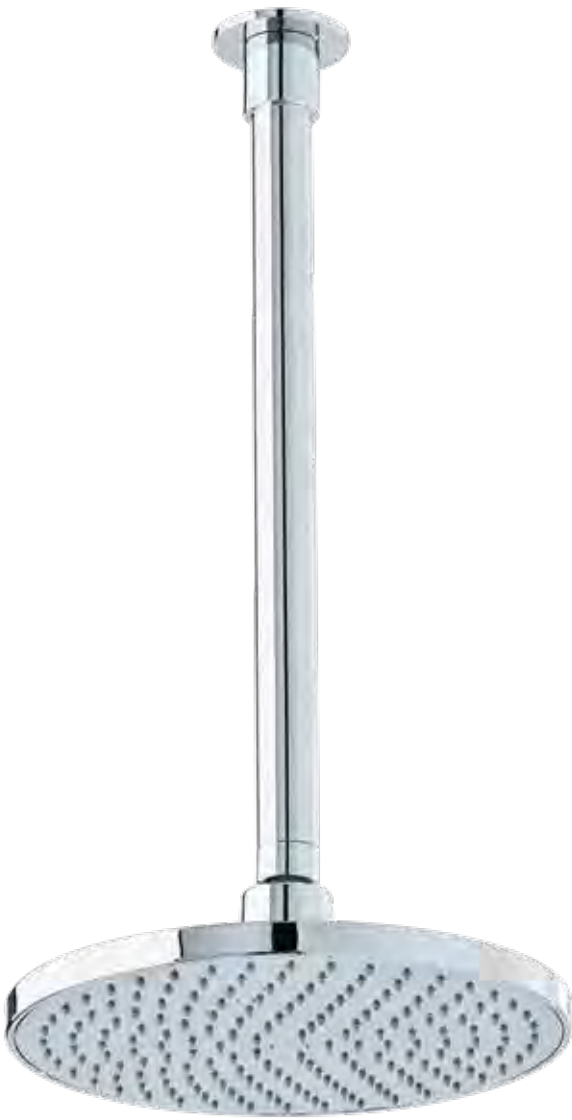
OH 030P
Quewb 250mm Vertical Arm
Chrome



OH 030H
Quewb Horizontal Arm
Chrome

Rain Maker showers

The Rain Maker collection offers both striking geometric forms and traditional shower designs featuring the best in water conservation technology. Mix and match with our selection of shower arms to create your personalised showering environment. All Rain Maker showers offer a full body spray and are 3 Star - 9L/min rated as per WELS licence number 0046.



OH 028V
Cosmic 350mm Vertical Arm
Chrome



OH 028S
Cosmic Swivel Swan Neck Arm
Chrome



OH 028H
Cosmic Horizontal Arm
Chrome

Comfort Collection

The Comfort Collection is our most popular range of Con-Serv accessories. The sleek European designs are a reflection of modern trends with clean, taut lines. Simple geometric forms with rounded edges enhance the aesthetics while ensuring safety. Crafted from brass and finished in chrome, you can be assured of long lasting looks and durability. This comprehensive collection is ideally suited to domestic and commercial environments.



BA 701
Soap Holder
Chrome



BA 715
Double Robe Hook
Chrome



BA 742
Soap Dispenser
Chrome



BA 780
Dual Sided Mirror
Standard and 3x Magnification
Chrome



BA 712
Toilet Paper Holder
Chrome



BA 722
Double Toilet Paper Holder
Chrome



BA 721
Spare Paper Holder
Chrome



BA 750
Toilet Brush Holder
Chrome



CR 300 Comfort Rail 300mm
CR 450 Comfort Rail 450mm
CR 600 Comfort Rail 600mm
CR 900 Comfort Rail 900mm
 All measurements above are Ø to Ø.
 Polish Supreme



BA 703
 Towel Ring
 Chrome



BA 708
 Stainless Steel Shelf
 500mm Ø to Ø
 Polish Supreme



BA 718
 Stainless Steel Corner Shelf
 280mm x 280mm
 Polish Supreme

BA 710
 Stainless Steel Shelf
 350mm Ø to Ø
 Polish Supreme



BA 729
 Glass Vanity Shelf
 530mm x 120mm, 10mm glass
 Clear Tempered Glass Shelf



BA 739
 260mm x 260mm, 10mm glass
 Corner Glass Shelf with Barrier



BA 704
 Single Towel Rail
 600mm Ø to Ø
 Chrome

BA 705
 Single Towel Rail
 800mm Ø to Ø
 Chrome

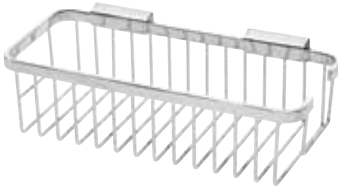


BA 706
 Double Towel Rail
 600mm Ø to Ø
 Chrome

BA 707
 Double Towel Rail
 800mm Ø to Ø
 Chrome

Bathroom Baskets

Con-Serv bathroom baskets are manufactured from heavy duty chrome plated brass and include innovative concealed fixings.



WB 001
Rectangular Basket
Large
Chrome



WB 002
Rectangular Basket
Medium
Chrome



WB 004
Open Front Rectangular Basket
Medium
Chrome

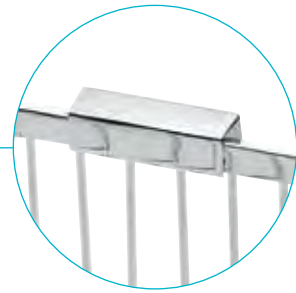


WB 005
Open Front Rectangular Basket
Small
Chrome



WB 006
Corner Basket With Hook
Chrome

Wall Mounting Bracket



WB 008
Corner Basket
Medium
Chrome



BB 011
Bathroom Basket
Large
Chrome



BB 017
Bathroom Basket
Large
Chrome





Protecting the world's most valuable liquid asset... water!™

OUR PROMISE

Con-Serv Corporation Australia Pty Ltd warrants all of its products (as below) with a Limited Lifetime Warranty on all mechanical parts from manufacturing defects in materials and workmanship under normal use in a domestic installation for as long as the original purchaser owns their home into which the particular product(s) was/were installed. A five year warranty (also on the terms below) will apply to commercial installations, irrespective of ownership.

Con-Serv will repair or replace defective items correctly installed as per the Con-Serv installation instructions. Con-Serv will not be liable for defects arising through normal wear and tear. Item(s) must be returned with proof of purchase to Con-Serv at 17 Glentanna Street, Kedron, Queensland 4031. We will attend to your warranty claim after we make appropriate investigations. Contact our Service Manager during normal office hours on 1300 467 322 or at our email address of warranty@con-serv.com.au. If a warranty claim is accepted, Con-Serv will bear the reasonable costs of the return of the defective item(s) to us. A claim for expenses associated with making a claim for a defective product must be in writing and submitted to us with copies of supporting documents. The benefits given under our warranty are in addition to other rights and remedies of the customer under a law in relation to goods and services to which this warranty relates. Our goods come with guarantees that cannot be excluded under the Australian Consumer Law. You are entitled to a replacement or a refund for a major failure and compensation for any other reasonable foreseeable loss or damage. You are also entitled to have the goods repaired or replaced if the goods fail to be of acceptable quality and the failure does not amount to a major failure. Visit the Con-Serv website www.con-serv.com.au for the detailed warranty policy.



CON-SERV CORPORATION AUSTRALIA PTY. LTD.
17 Glentanna Street, Kedron · Qld. 4031 Australia
Phone: +61 (0)7 3630 5744 · Fax: +61 (0)7 3630 5755
Email: mail@con-serv.com.au · www.con-serv.com.au